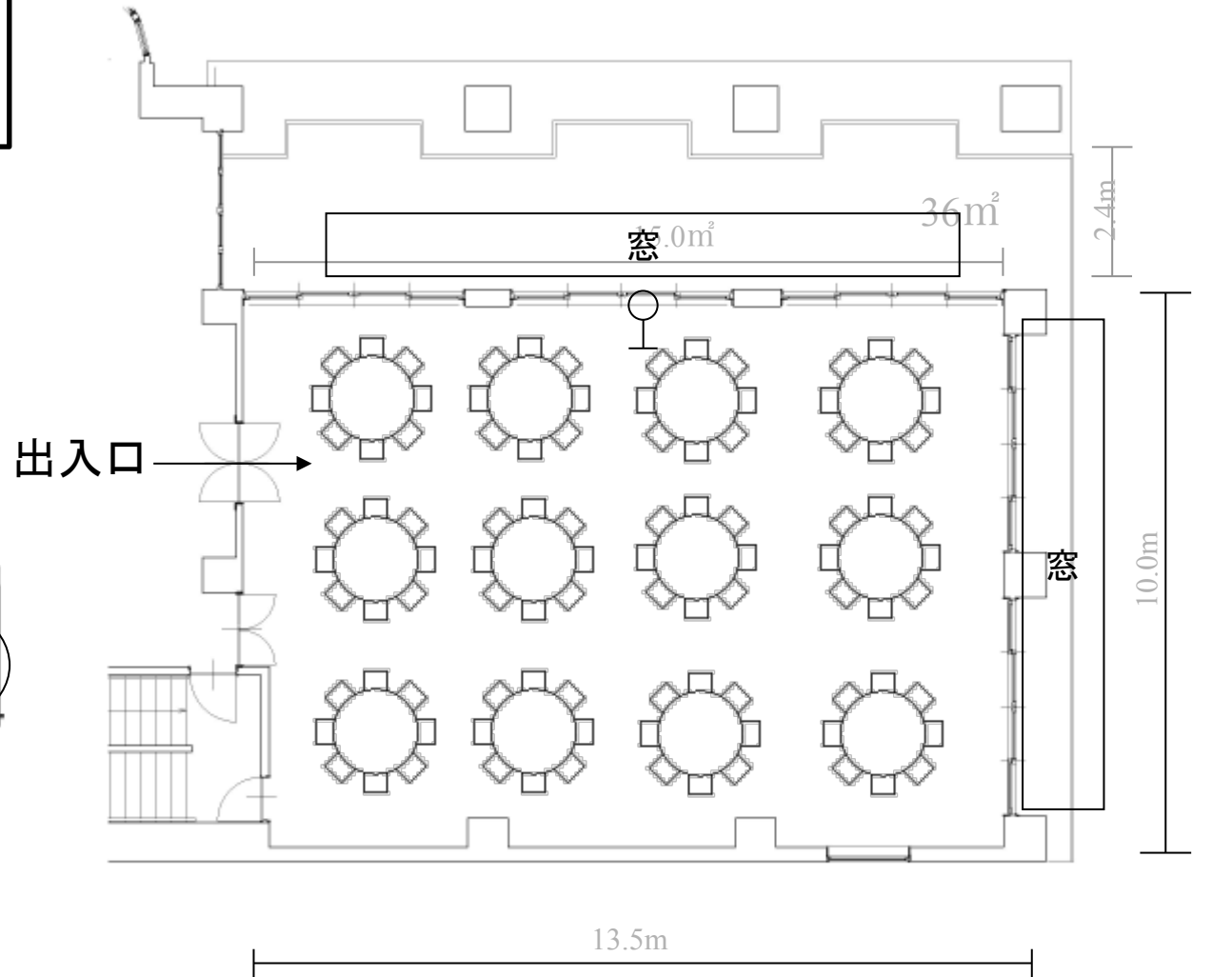
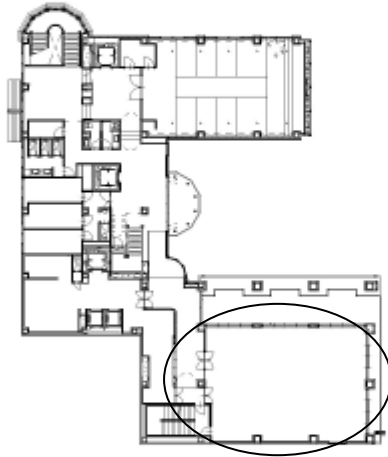


# Floor Information

## 3F THE ORIENTAL ROOM



8名様×11卓=88名様  
計88名様

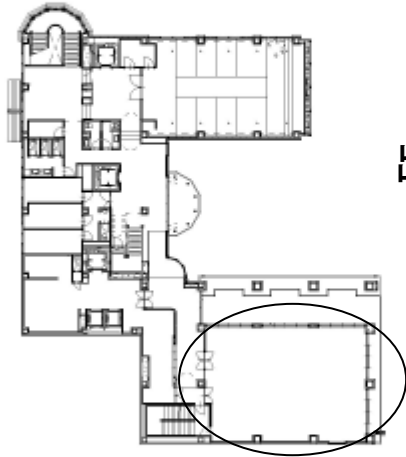


135m<sup>2</sup>

*The Kawabun Nagoya*

# Floor Information

**【スクール型式】**  
2名様掛 × 24卓 = 48名様  
**計48名様**  
3名様掛けで72名様ご案内可能です  
※テーブルサイズ  
450 × 1800 × 700 (mm)

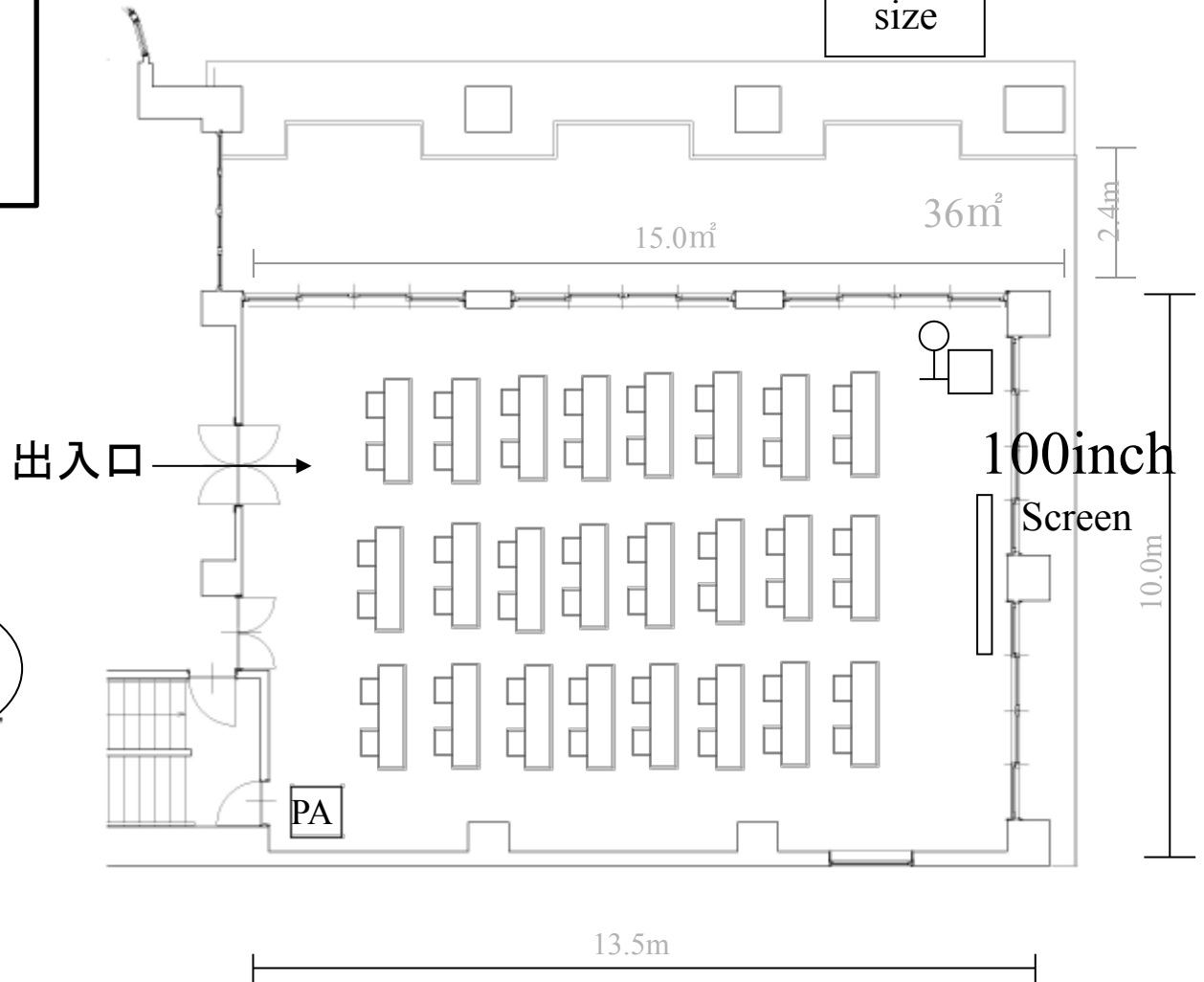


3F THE ORIENTAL ROOM

2000

Screen size

1500

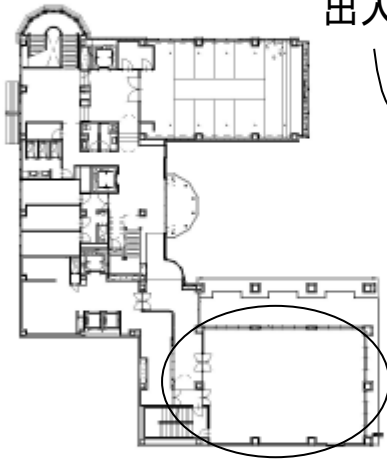


*The Kawabun Nagoya*

135m<sup>2</sup>

# Floor Information

**【コの字】**  
2名様掛 × 15卓 = 30名様  
**計30名様**  
3名様掛けで45名様ご案内可能です  
※テーブルサイズ  
450 × 1800 × 700 (mm)

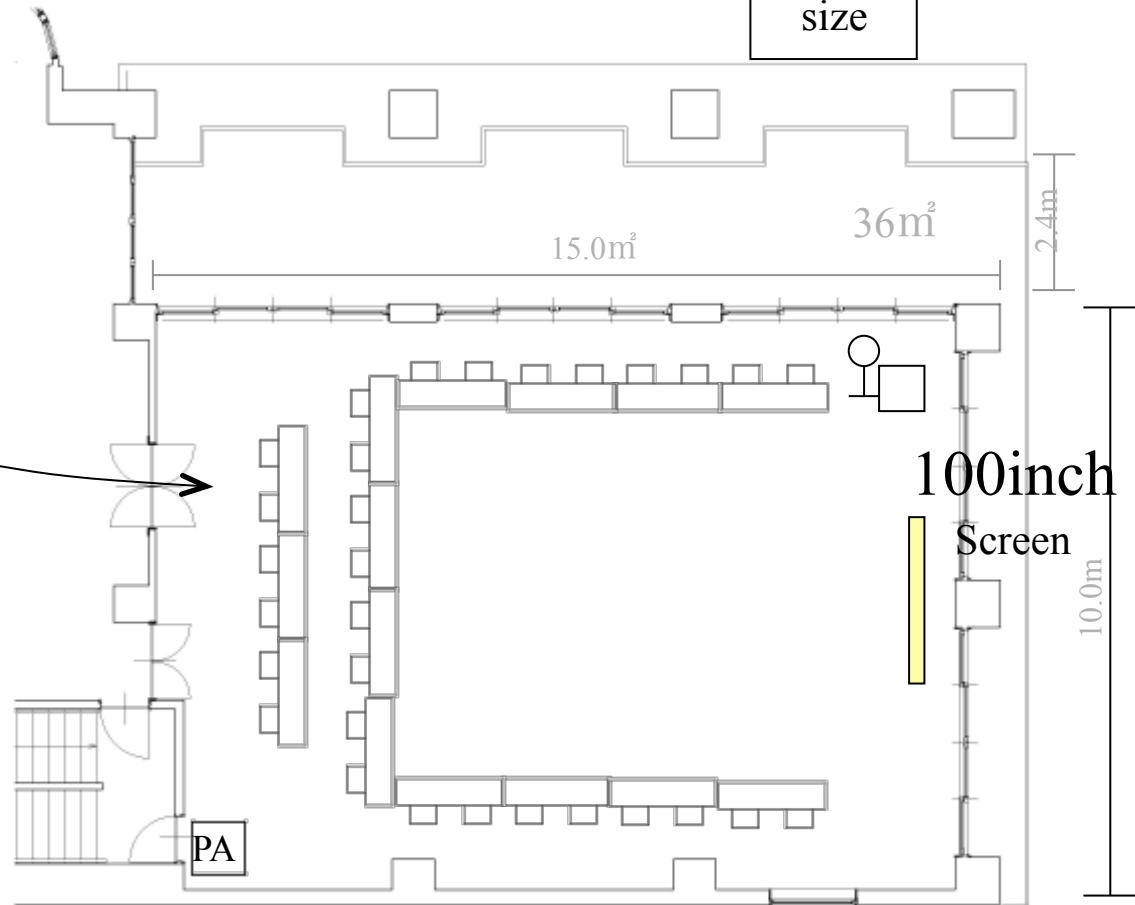


3F THE ORIENTAL ROOM

2000

Screen size

1500



13.5m

135m<sup>2</sup>

*The Kawabun Nagoya*

# Floor Information

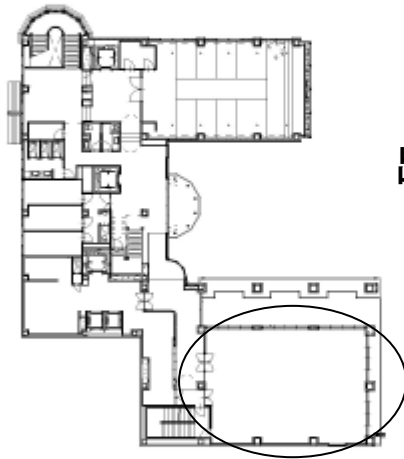
【シアター型式】  
9名様×12列=108名様  
計108名様

3F THE ORIENTAL ROOM

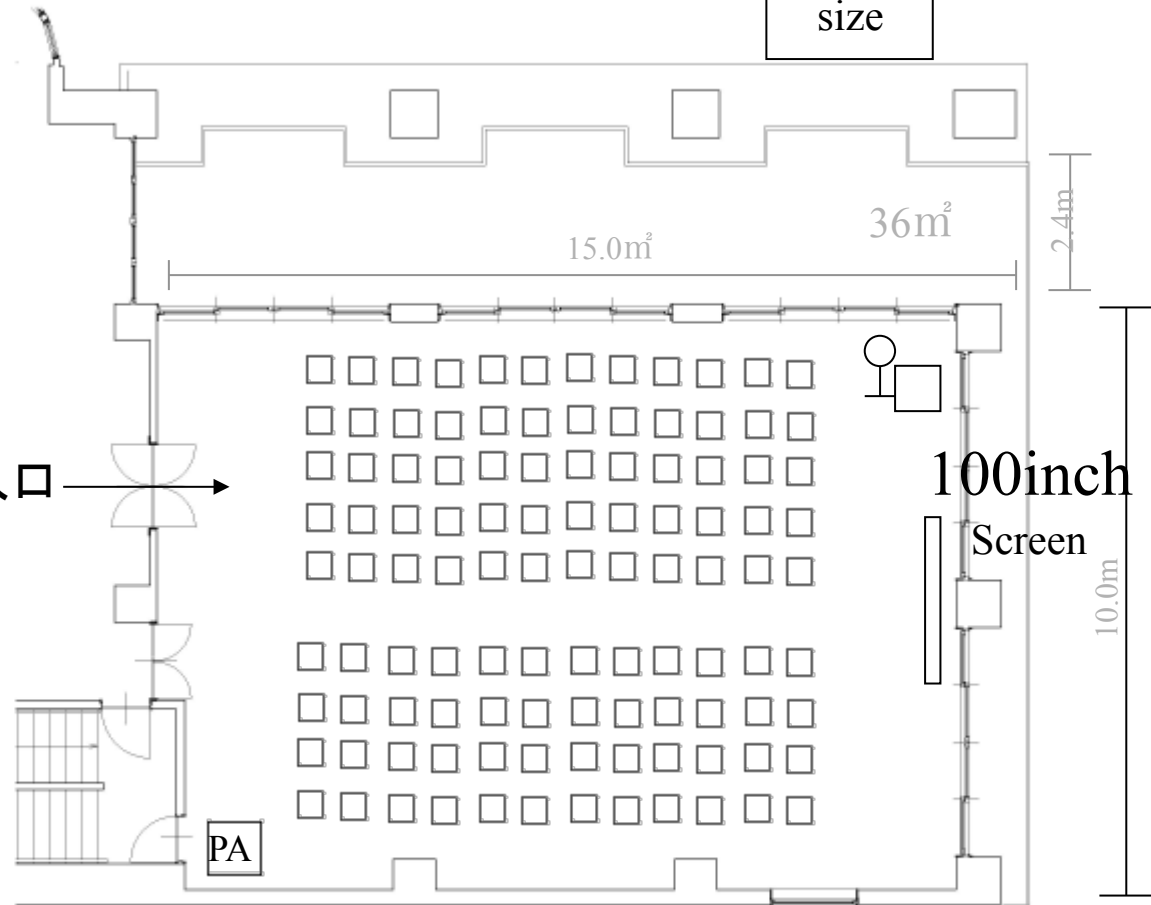
2000

Screen  
size

1500



出入口 →



15.0m<sup>2</sup>

36m<sup>2</sup>

2.4m

100inch  
Screen

10.0m

13.5m

135m<sup>2</sup>

*The Kawabun Nagoya*